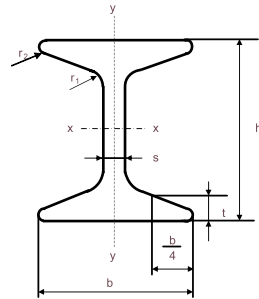


GI and TH Sections for Mine Support

Dimension Standart
DIN 21530-2/3

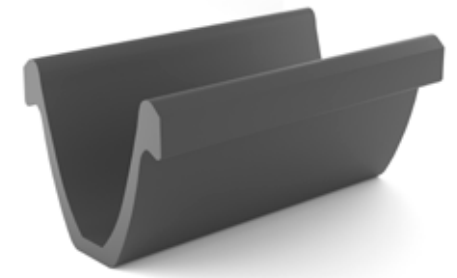
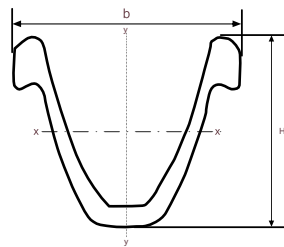
Quality Standart EN
10025-1 / 2



Section GI	Dimensions & Tolerances											Slope %	Section F (cm ²)	Unit Mass G (kg/m)	Static Parameters					
	h mm		b mm		s mm		t mm		r1	r2	x-x				x-y					
											L _x cm ⁴				W _x cm ³	i _x cm	L _y cm ⁴	W _y cm ³	i _y cm	
GI 110	110	±2,0	84	±1,5	10,0	±0,6	14,0	-1,0	14,0	5,0	33,0	31,1	24,5	570	103	4,28	103	24,5	1,82	
GI 140	140	±2,0	110	±1,5	12,0	±0,7	19,0	-1,5	17,0	8,0	33,0	31,0	41,6	1568	227	5,47	305	57,3	2,44	

Dimension Standart
DIN 21530

Quality Standart EN
10025



Section TH	Dimensions & Tolerances								Section F (cm ²)	Unit Mass G (kg/m)	Static Parameters			
	H mm		B mm		b mm	h1	h2	x-x			x-y			
								W _x cm ³			L _x cm	W _y cm ³	L _y cm	
70/29	124,0	±2,0	150	±1,5	44,0	33,0	15,0	37,0	29,0	94	616	103	775	
70/34	136,5	±2,0	171	±1,5	51,0	34,0	15,5	43,1	33,8	128	892	141	1205	