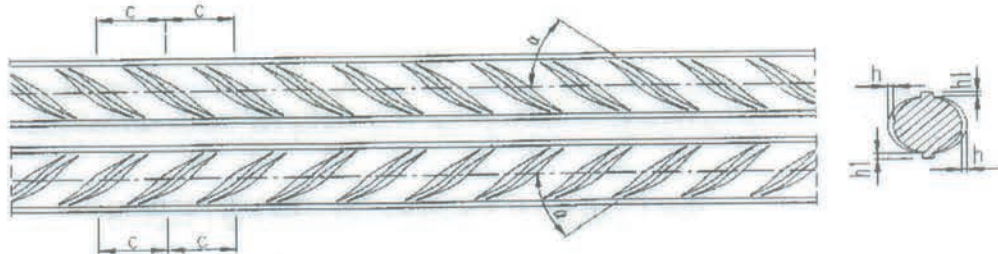


Weldable reinforcing steels - class B 420 B



Nominal diameter, No: No: 8,10, 12, 14, 16, 18, 20, 22, 25, 28, 32, 36, 40

Mechanical properties:

- Yield strength (R_e) – **min. 420 MPa**
- Tensile strength (R_m) – **min. 460 Mpa**
- Percentage total elongation at maximum force (A_{gt})- **min. 5%**
- Percentage elongation (A_5) – **min. 14 %**
- R_m / R_e – **min. 1,08**

Chemical composition of the product:

C %	P %	S %	N %	Cr %	Ni %	Cu %
max 0,29	max 0,045	max 0,050	max 0,014	max 0,35	max. 0,35	max 0,65

Date: 08/06/2009
Sofia

Director of "Conformity Assessment" Dept.
T. Lyubanova



BULGARKONTROLA S.A. – Sofia with identification number 14
Permit № РОССП-14/24.01.2008 г., issued by MRRB